

Продажа | Квартира
 Florence,

Цена

700000 € 6034 €/m²

Описание

Florence, Tuscany - Florence:

In Tuscany, on an exclusive position, between Florence and Fiesole, inside an historical building surrounded by 10.000 square metres of common park, five luxury apartments for sale.

All the apartments boast:

- underfloor heating and cooling system
- five-function Home Automation System
- digital satellite television and wired wireless system
- automatic anti-intrusion system, that can be distance activated
- CCTV cameras installed in communal and private entrance areas
- telephone system with ADSL connection
- huge double garage (8.54 sqmts) on the basement floor with remote doors. The basement floor is connected to the house with a lift and with a large internal staircase leading to the entrance hall.

FLORENCE LUX 1 - 360.46 sqmts (Ref.957)

The apartment has a total surface of 360.46 square metres (289.84 square metres + 70.62 square metre of basement) and is disposed on three levels, composed as follows.

Ground floor: entrance hall, living room, dining room, kitchen, bathroom, sitting room with studio, bedroom with bathroom.

Mezzanine floor: two bedrooms with bathroom en suite and private lounge.

Basement floor: cellar with wine tasting area and wine storage. On this floor there is also a relax area, Home Cinema room and fitness area.

FLORENCE LUX 2 - 177.23 sqmts (Ref.959)

The apartment (168.46 square metres) with direct access from the entrance hall,



is disposed on two levels, composed as follows.

Ground floor: dining room , living room, kitchen, studio, bedroom and bathroom.

Mezzanine floor: double bedroom with sitting room, dressing room and wardrobe, bathroom and two lounges overlooking the lower level.

FLORENCE LUX 3 - 149.64 sqmts (Ref.961)

The apartment with direct access to the park, has a total surface of 141.10 square metres and is disposed on two levels, composed as follows.

Ground floor: kitchen, reception room, bedroom and two bathrooms.

Mezzanine floor: fitness area with bathroom, sitting room overlooking the lower floor.

FLORENCE LUX 4 - 117.54 sqmts (Ref.958)

The apartment has a total surface of 109 square metres (71 square metres + 38 square metres basement) and is disposed on three levels, composed as follows.

Ground floor: reception room, kitchen/dining, bedroom and bathroom.

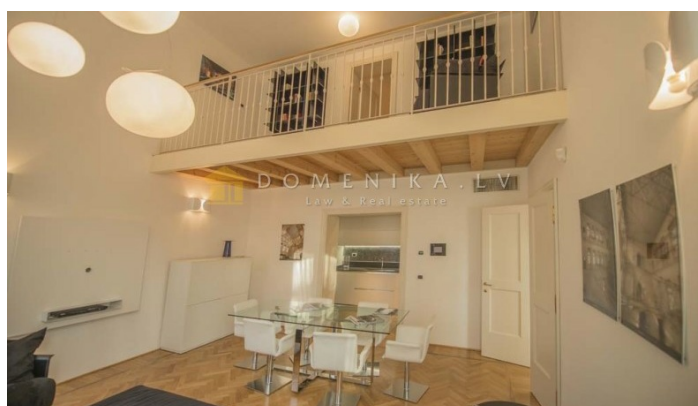
Mezzanine floor: studio.

Basement floor: open space.

FLORENCE LUX 5 - 116.87 sqmts (Ref.960)

The apartment with direct access to the park, has a total surface of 108.33 square metres, and it is composed by a reception room, a kitchen, a bathroom, a storage closet, a bedroom with bathroom en suite and a bedroom with walk-in closet.

Площадь:	116 m ²
Комнаты:	4
Этажей:	





DOMENIKA.LV

Phone WhatsApp/Viber

[+371 29118879](tel:+37129118879)

Phone office

[+371 67336733](tel:+37167336733)

www.domenika.lv

dainis@domenika.lv

DOMENIKA LATVIA - Law & Real Estate

32 Kr.Barona Str., Riga, LV-1011

 Before you print think about the environment