

For rent | Flat
Panorama Plaza
Rīga,

Price

2000 €/month

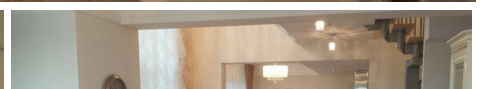
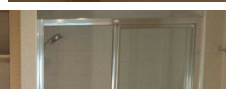
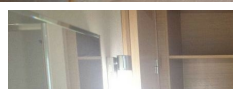
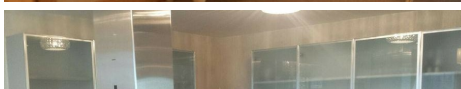
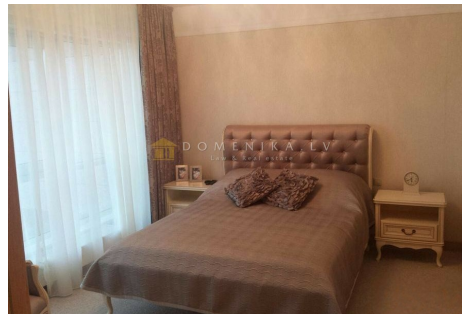
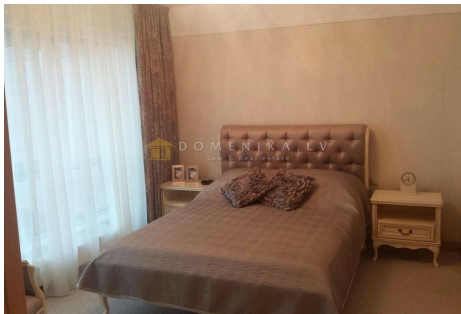
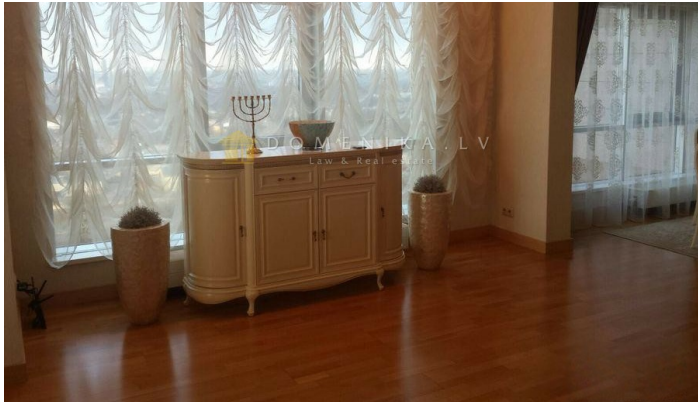
13 €/m²

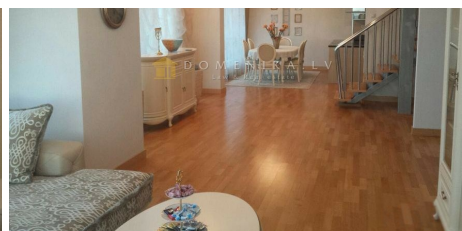
Description

Two-storey Apartment which will not leave indifferent the most demanding tenant. High quality, fully furnished with new furniture and appliances apartment in a residential and business complex "Panorama Plaza". Apartment with clever design, elegant with fine nuances and panoramic views. Spacious living room, two bedrooms with personal closets and individual bathrooms, built-in furniture and appliances of A-class furniture from Italy. The apartment is bright and Sunny and ready to move in immediately. Location of the house is the image and style of modern business people. 10 minutes from the centre of Riga and 10 minutes from the airport of the capital of Latvia. The house has three high-speed elevators. Round the clock security and video surveillance. A place for cars in the underground Parking included in the price. Equipped territory, a children's Playground and Parking for guests of the house.



Area:	150 m ²
Rooms:	3
Floor:	28
Floors:	29
Parking:	garage
Developed infrastructure:	yes
Built-in furniture:	yes
Isolated rooms:	yes





DOMENIKA.LV

Phone WhatsApp/Viber

[+371 29118879](tel:+37129118879)

Phone office

[+371 67336733](tel:+37167336733)

www.domenika.lv

dainis@domenika.lv

DOMENIKA LATVIA - Law & Real Estate

32 Kr.Barona Str., Riga, LV-1011

P Before you print think about the environment