

For sale | House

Monselice,

### Price

6500000 €

2241 €/m<sup>2</sup>

### Description

Monselice, Veneto - Padua:

A few kilometers from the centre of Padua, ancient Venetian Villa placed in a open and sunny position in a park of 6000 square meters.

The villa, built in the late sixteenth century and later refurbished in the seventeenth century, consists of a main building of 2900 square meters with ground floor, first floor and attic, two-storey barchessa with porch and two-floors annex.

The main floor, the attic and the house are intended for residential use.

The ground floor, for a total of about 900 square metres, boasts the restaurant with all the permissions.

The complex is in an excellent state of repair and the finishes are top quality. Many recovery interventions were performed between 2007 and 2011.

The property has the permission to work as a hotel with the PRG variant of 2003 and 2009.

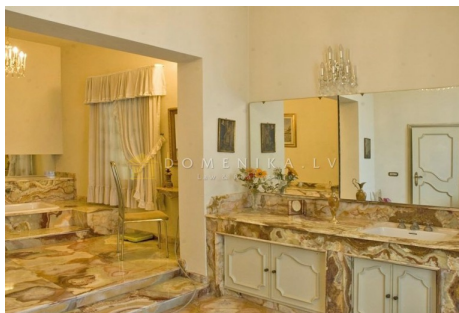
The park surrounding the villa has a total surface area of 6000 square meters with lawns, tall trees, and is fenced in partly with railings and partly with original stone walls.

The 75 square metres chapel is located in the park.





Area:	2900 m2
Rooms:	64
Floors:	







DOMENIKA.LV

Phone WhatsApp/Viber

[+371 29118879](tel:+37129118879)

Phone office

[+371 67336733](tel:+37167336733)

[www.domenika.lv](http://www.domenika.lv)

[dainis@domenika.lv](mailto:dainis@domenika.lv)

DOMENIKA LATVIA - Law & Real Estate

32 Kr.Barona Str., Riga, LV-1011

---

P Before you print think about the environment